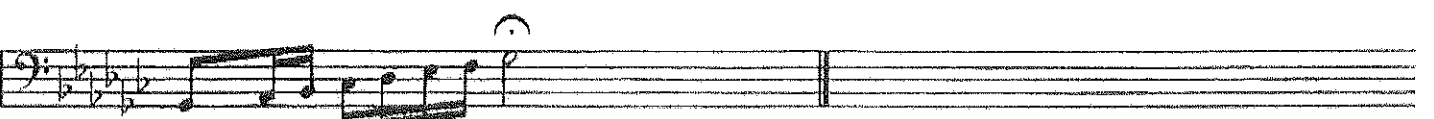


I.M.E.A. JUNIOR H.S. AUDITION SCALES

Bassoon, Trombone & Euphonium B.C.



Trombone 1

PRAIRIE DANCES

Commissioned by the Band Directors of the Texas Music Educator Association Region 2 North Zone
For the Region 2 4A-5A All-District Band, Wichita Falls, Texas.

$\text{♩} = \text{c. } 160+$

DAVID R. HOLSINGER (ASCAP)

First musical staff for Trombone 1, starting with a dynamic marking of *f*. The staff contains six measures of music in bass clef with various time signatures (6/8, 3/4, 6/8, 3/4, 6/8).

Second musical staff for Trombone 1, continuing the piece with six measures of music in bass clef with various time signatures (6/8, 3/4, 6/8, 3/4, 6/8).

9

Third musical staff for Trombone 1, containing six measures of music in bass clef with various time signatures (6/8, 3/4, 6/8, 3/4, 6/8).

17

Fourth musical staff for Trombone 1, containing six measures of music in bass clef with various time signatures (3/4, 6/8, 3/4, 6/8, 3/4, 6/8).

Fifth musical staff for Trombone 1, containing six measures of music in bass clef with various time signatures (6/8, 3/4, 6/8, 3/4, 6/8, 3/4).

25

Sixth musical staff for Trombone 1, starting with a dynamic marking of *mf*. The staff contains six measures of music in bass clef with a 3/4 time signature.

33

Seventh musical staff for Trombone 1, starting with a dynamic marking of *f*. The staff contains six measures of music in bass clef with a 3/4 time signature.

41

Eighth musical staff for Trombone 1, containing six measures of music in bass clef with a 3/4 time signature.

Ninth musical staff for Trombone 1, containing six measures of music in bass clef with a 3/4 time signature.

Trombone 1

Musical score for Trombone 1, measures 51-119. The score is written in bass clef with a key signature of one flat (B-flat). The music is divided into systems, with measure numbers 51, 59, 67, 75, 87, 95, 103, 111, and 119 marked in boxes. Dynamics include *sfz*, *f*, *mf*, and *f*. The score features various rhythmic patterns, including eighth and sixteenth notes, and rests. A fermata is present over a note in measure 119. The piece concludes with a double bar line and a '2' indicating a repeat.

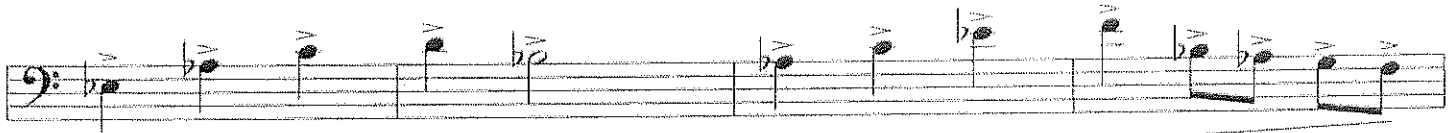
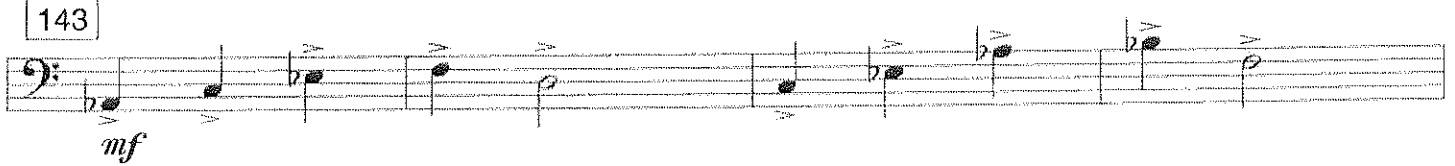
Trombone 1



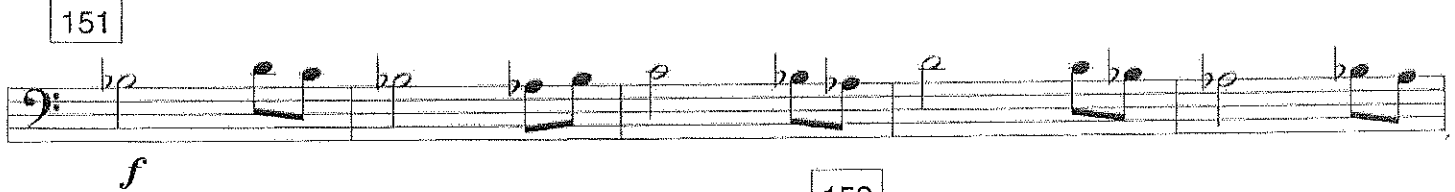
135



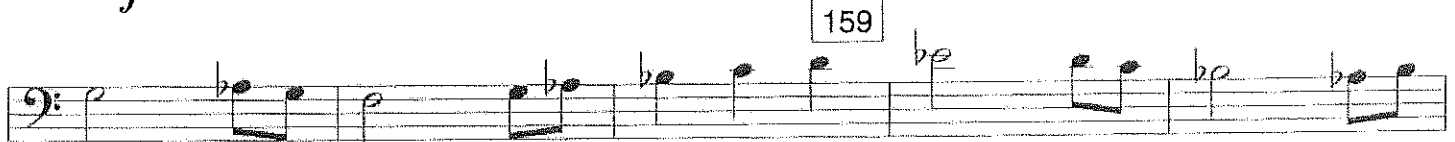
143



151



159



165

