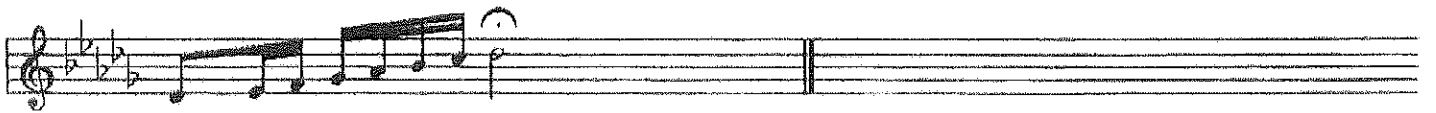
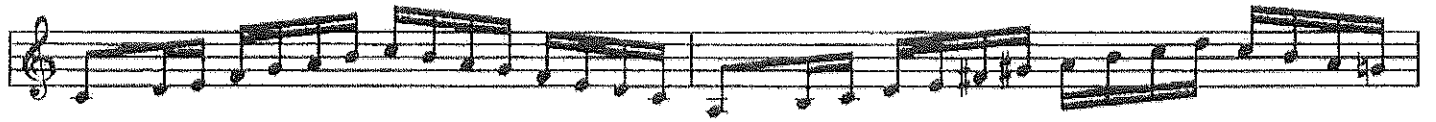
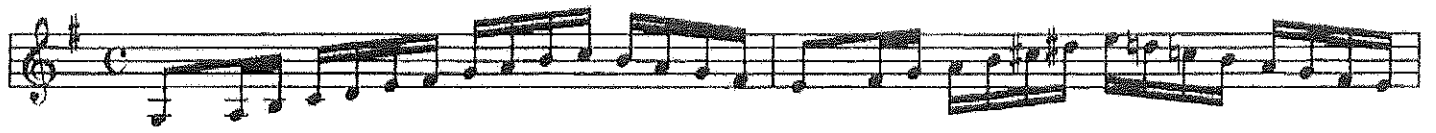


I.M.E.A. JUNIOR H.S. AUDITION SCALES

Horn



F Horns 1&2

PRAIRIE DANCES

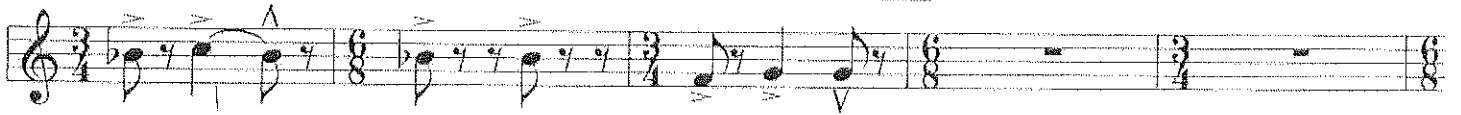
Commissioned by the Band Directors of the Texas Music Educators Association Region 2 North Zone
For the Region 2 4A-5A All-District Band, Wichita Falls, Texas.

DAVID R. HOLSINGER (ASCAP)

♩ = c. 160+



9



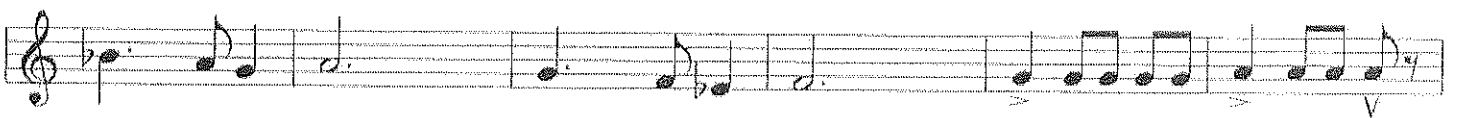
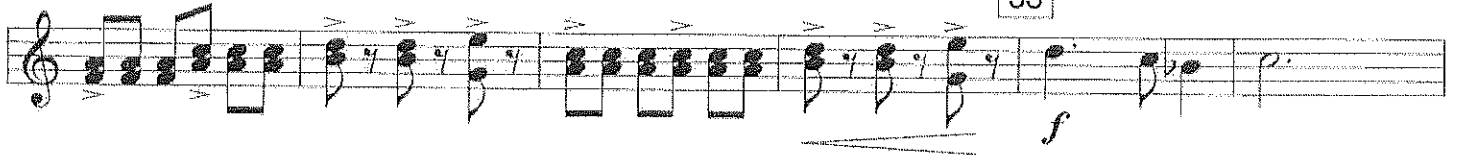
17



25



33



41

F Horns

Musical staff for measures 41-50, featuring a melodic line in treble clef with a key signature of one flat (Bb) and a 3/4 time signature.

51

Musical staff for measures 51-58, featuring a rhythmic accompaniment with dynamic markings *sfz* and *f*.

Musical staff for measures 59-66, featuring a rhythmic accompaniment with various time signatures including 3/4, 6/8, and 3/2.

59

Musical staff for measures 67-74, featuring a rhythmic accompaniment with various time signatures including 6/8, 3/4, and 3/2.

67

Musical staff for measures 75-82, featuring a rhythmic accompaniment with various time signatures including 6/8, 3/4, and 3/2.

75

Musical staff for measures 83-90, featuring a melodic line with dynamic marking *f*.

Musical staff for measures 91-98, featuring a melodic line with dynamic marking *f*.

87

95

103

Musical staff for measures 87-103, featuring a melodic line with dynamic marking *mp* and an 8-measure rest.

111

119

Musical staff for measures 104-110, featuring a melodic line with an 8-measure rest.

Musical staff for measures 111-119, featuring a rhythmic accompaniment with various time signatures including 3/4, 6/8, and 3/2.

